

CLCC WEEKLY BULLETIN

<p>Monday 27th November</p>	<p>Period 1 Lunchtime Lunchtime 15.00-16.00 15.00-16.00 15.15-16.15</p>	<p>Tutor Period Year 7 Football – Leysland Site (DBU) Music Tech Club – MU3C Riders Basketball (all years) – Countesthorpe Gym Dance Club at Countesthorpe Site (all years)(AHU)Year 8 Girls Staff Singing Club – music rooms</p>
<p>Tuesday 28th November</p>	<p>Lunchtime Lunchtime 14.30-16.30 15.00-16.00 15.00-16.00 15.00-16.00 15.00-16.00 15.00-16.00 15.00-16.00 15.00-16.15 15.30-17.00</p>	<p>* Discovery & Impact Christian Club Chemistry Olympiad - Y13 – S04C U13 National Cup Girls Football vs Kettering Buccleuch Academy (home) (NRO/BMA) Homework Club – IT3C – open to all years Orchestra (MU2C) Further maths (top set year 11 only) – M4L BTEC Dance Club – Countesthorpe Site (Yrs 10-13) (AHU) Year 7 Trampoline at Countesthorpe (NRO/SMA) KS3 only – Develop your own IT Apps (IT1C) Duke of Edinburgh Bronze Awards - HUBC Year 9 National League vs Rawlins Academy (home) (NWI)</p>
<p>Wednesday 29th November</p>	<p>Lunchtime Lunchtime 14.30-16.00 15.00-16.00 15.30-17.00</p>	<p>Music Theory – drop in session Music Tech Club – Music block U13 Girls National Cup vs Brockington (home) (NRO/BMA) Years 8&9 Trampoline at Countesthorpe (AHU/SMA) Year 8&9 Local League Basketball vs Thomas Estley (home)</p>
<p>Thursday 30th November</p>	<p>Lunchtime Lunchtime 15.00-16.00 15.00-16.00 15.00- 14.45-17.00 15.00-16.00 15.00-16.00 15.00-16.00 15.00-16.00 15.00-16.00 15.00-16.00</p>	<p>Musical Theatre Theatre Tech Club – CCC Theatre Homework Club – IT3C – open to all years Year 11 GSCE Drama studies rehearsals Choir (MU2C) Year 12 & 13 Chemistry Support Drop in Session – S3C Years 7,8 &9 girls football training – Countesthorpe (BMA/KMC) Year 7&8 Rugby training at Countesthorpe (Phil) Year 7 Basketball training – Leysland (NWI) Badminton at Countesthorpe Site (DBU) Trampoline at Countesthorpe Site (NRO)</p>
<p>Friday 1st December</p>	<p>15.00- 15.00- 15.00-</p>	<p>Board game club – invite only Film Club – Countesthorpe Site – TO BE ADVISED Staff Football</p>

*** The Discovery & Impact Christian Lunch Group (more info)**

Discovery meets every Tuesday lunchtime in Leysland Meeting Room for those students having lunch at Leysland and then in SF5 for students having a Countesthorpe lunchbreak. Come and join us for games, discussion and to explore the Christian faith in a fun and relaxed way. All welcome.

Note for Staff – The College is once again participating in the LOROS Collection box scheme, so instead of sending Christmas cards to each other, a donation can be made to LOROS – the boxes will be in each reception area.

Please See the Assembly Rota for all years groups below

2017/2018

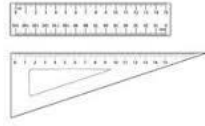
ASSEMBLY ROTA

WEEK 1	MONDAY	TUESDAY	WEDNESDAY	THURSDAY	FRIDAY
C - SITE	7	8	9	12 and 13	
L - SITE	7	8	11	10	

WEEK 2	MONDAY	TUESDAY	WEDNESDAY	THURSDAY	FRIDAY
C - SITE	ATTENBOR	BRUNEL	HAWKINS	TURING	
L - SITE	LAWRENCE	SPENCER	WILBERFOR		

This information is also available on the College website.

π



MATHEMATICS

AFTER SCHOOL SESSIONS

For **KS3**, **KS4** and **KS5** from 3 pm to 4 pm

Tuesday

KS5 with **LWI** in **M13L**

KS4 Drop in with **SBA** in **M11L**

KS3 Drop in with **RCA** in **M8L**

Thursday

KS5 with **LWI** **M13L**

KS4 Drop in with **DCU** in **M9L**

KS3 Drop in with **ZGA** in **M1L**



Turner Education Foundation

Grants of £100 are available to previous students from Countesthorpe Leysland Community College

If you have a child that attended Countesthorpe Leysland Community College and has now left to take up an apprenticeship or go on to study at University then they could be eligible for a grant of £100 from the Turner Education Foundation towards books and other resources.

To make an enquiry and ask for an application form please email Mrs Jean Smart at jeansmart63@icloud.com

The closing date for completed applications is Tuesday December 5th 2017.



 *Give a little this Christmas* 



We will be collecting items to donate to **Lutterworth & Villages Foodbank**, our local **Foodbank**, which has a Distribution Centre in **Countesthorpe** as we thought it would be a nice way to unite across **Countesthorpe Leysland Community College**.

Please bring your item(s) to your tutor **before Friday 8th December 2017**

We need **IN-DATE, NON-PERISHABLE** goods: including Toiletries, Tinned ham, Sandwich spreads, Snack Bars, Laundry items, Size 6 Nappies, Coffee, Instant Mash, Custard etc.

Please see the list for more items.



Twitter: @LuttFoodBank

Facebook: Lutterworth and Villages Foodbank

www.lutterworthvillages.foodbank.org.uk

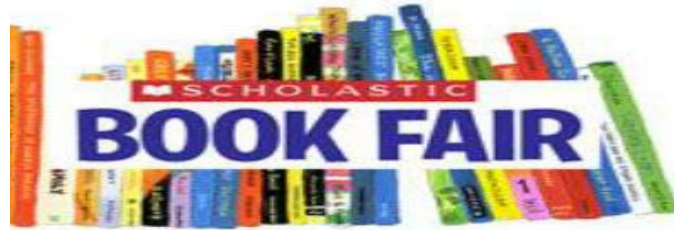


Urgent items needed for the Foodbank Collection:

All items to be in date, no fresh or frozen please.

Instant mash (180g)
Tinned ham / corned beef (200-300g)
Small tinned fruit (up to 350g)
Rice pudding (400g)
Instant Custard
Instant drinking Chocolate (made with Water)
Bottled Squash (750ml – 1 litre)
Long life fruit juice (not chilled)
Jam
Instant snack noodles
Deodorant (male & female)
Shaving foam
Washing powder (small)
Washing-up liquid
Dog and cat food (400g tins or pouches)
Spaghetti in sauce
Cheese crackers
Christmas pudding
Chocolate snack bars
Coffee
Toiletries – shampoo/conditioner/shower gel/toothpaste/toothbrushes
Feminine hygiene products
Supermarket carrier bags (long life)





SCHOLASTIC HALF PRICE BOOK FAIR

6th December - 12th December

CLCC library at lunch

New: David Walliams Bad Dad just £4.50

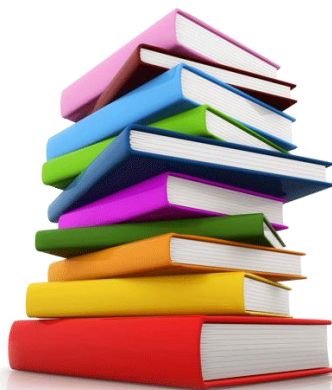
New: Diary of a Wimpy Kid Getaway just £4.50

New: Tom Gates Epic just £4.00

New: Dork Diaries Crush Catastrophe just £4.00

PLUS LOTS MORE

CASH ONLY



H U N C O T E



COMMUNITY CINEMA

@BlabyDC
 /BlabyDC
www.blaby.gov.uk

0116 275 0246
www.huncotepavilion.co.uk

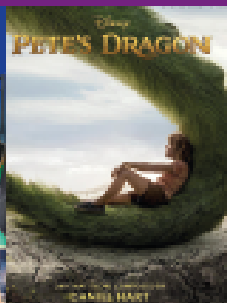
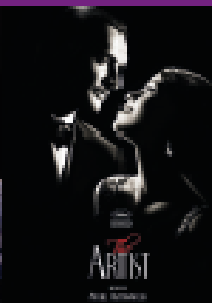
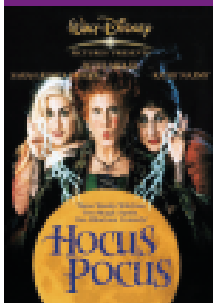
Screenings will take place in the meeting room at **The Pavilion Leisure Centre, Sportsfield Lane, Huncote, LE9 3BN**. The meeting room is located upstairs and is accessible by stairs or our lift.

Our films run monthly and are priced at **£4.00 per ticket**.

BOOKING IS ESSENTIAL, call **0116 275 0246** or for further information by emailing the Arts Development Service: leisure@blaby.gov.uk.

Refreshments are available to purchase from the café.

Soft play area available for children before/after the screenings, free of charge. Toilets with baby changing facilities.



HOCUS POCUS

Wednesday 18th October

10.30am | PG | 1h 36min | Comedy, Family, Fantasy

After three centuries, three witch sisters are resurrected in Salem, Massachusetts on Halloween night, and it is up to two teenagers, a young girl, and an immortal cat to put an end to their reign of terror once and for all.

IT'S A WONDERFUL LIFE

Tuesday 28th November

2.00pm | U | 2h 10min | Drama, Family, Fantasy

An angel is sent from Heaven to help a desperately frustrated businessman by showing him what life would have been like if he had never existed.

THE NIGHTMARE BEFORE CHRISTMAS

Saturday 2nd December

2.00pm | PG | 1h 16min | Animation, Family, Fantasy

Jack Skellington, king of Halloween Town, discovers Christmas Town, but his attempts to bring Christmas to his home cause confusion.

THE ARTIST

Tuesday 16th January

2.00pm | PG | 1h 40min | Comedy, Drama, Romance

A silent movie star meets a young dancer, but the arrival of talking pictures sends their careers in opposite directions.

SING

Wednesday 14th February

10.30am | U | 1h 48min | Animation, Comedy, Family

In a city of humanoid animals, a hustling theatre impresario's attempt to save his theatre with a singing competition becomes grander than he anticipates even as its finalists' find that their lives will never be the same.

PETE'S DRAGON

Saturday 10th March

2.00pm | PG | 1h 42min | Action, Adventure, Comedy

The adventures of an orphaned boy named Pete and his best friend Elliot, who just so happens to be a dragon.

Limit of 40 seats available. Booking is essential.

